

- AQUIND Interconnector**
- ▭ Marine Cable Corridor
- ▭ Archaeological Study Area (ASA) up to MHWS
- UK European Economic Zone (EEZ)

The Infrastructure Planning (Environmental Impact Assessment) Regulations 2017

REV	DATE	BY	DESCRIPTION	CHK	APP
04	20/08/2019	KF	Study Area update	SS	AB
03	07/01/2019	KL	FINAL	SS	AB
02	12/11/2018	KL	SECOND DRAFT	SS	AB
01	01/11/2018	KL	FIRST DRAFT	SS	AB

DRAWING STATUS: **FINAL**



Head Office: Portway House, Old Sarum Park,
Salisbury, Wiltshire, UK SP4 6EB
www.wessexarch.co.uk

CLIENT:
AQUIND

PROJECT:
AQUIND Interconnector

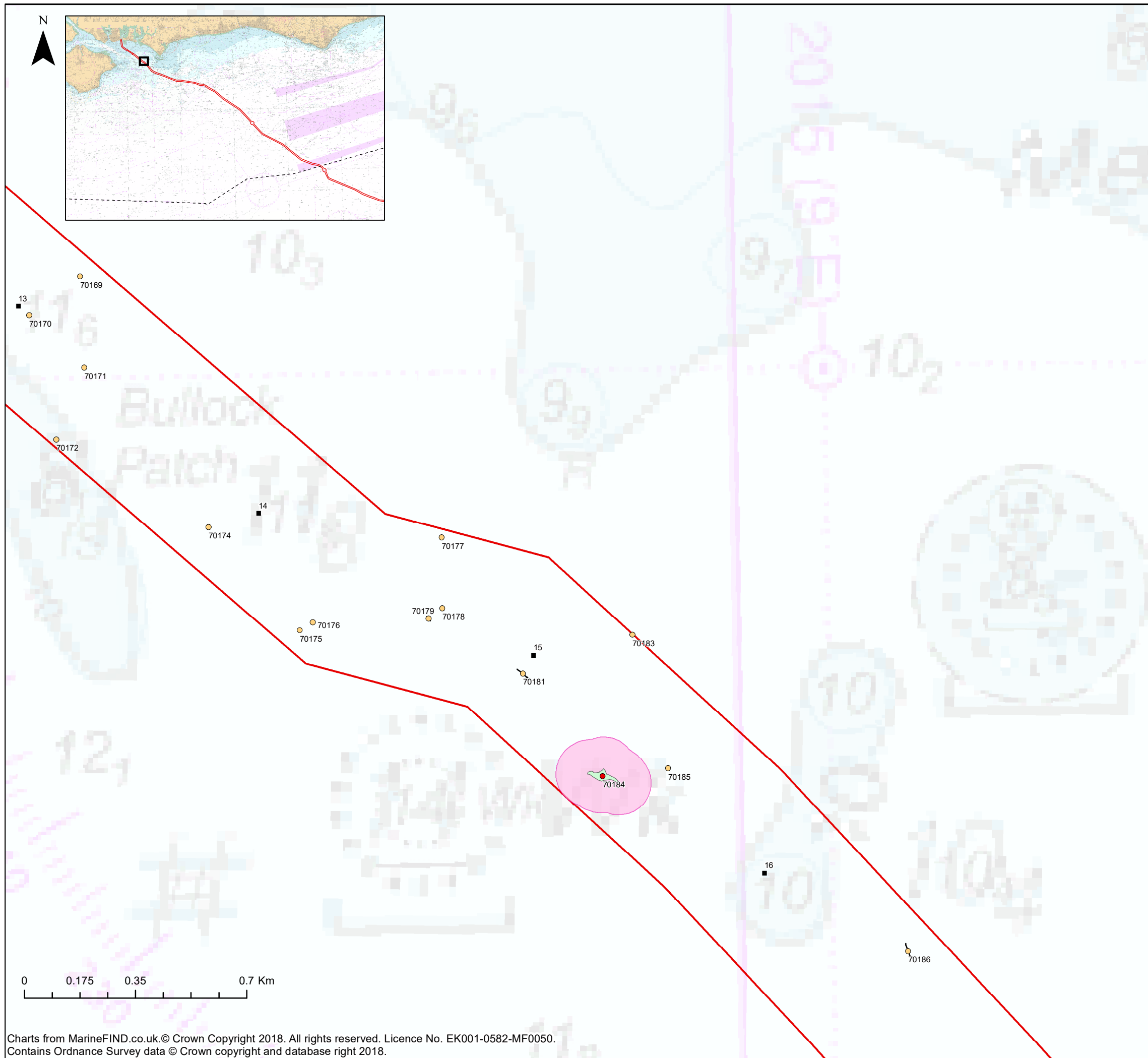
TITLE:
Figure 14.1 Location of Aquind Interconnector Marine Cable Corridor (UK Sector)

SCALE AT A3 1:350,000	CHECKED: SS	APPROVED: AB
--------------------------	----------------	-----------------

PROJECT NO: EN020022	DESIGNED: KL	DRAWN: KL	DATE: 22/08/2019
-------------------------	-----------------	--------------	---------------------

DRAWING NO: EN020022 – ES – 14.1	REV.NO. 04
--	----------------------

Charts from MarineFIND.co.uk © Crown Copyright 2018. All rights reserved. Licence No. EK001-0582-MF0050. Contains Ordnance Survey data © Crown copyright and database right 2018.



- AQUIND Interconnector**
- Marine Cable Corridor
 - UK European Economic Zone (EEZ)
 - Seabed feature extents
 - Linear seabed features
 - Recommended Archaeological Exclusion Zones (AEZs)
 - A1 – Anthropogenic origin of archaeological interest
 - A2 – Uncertain origin of possible archaeological interest
 - Kilometre Point (KP)

The Infrastructure Planning (Environmental Impact Assessment) Regulations 2017

REV	DATE	BY	DESCRIPTION	CHK	APP
03	07/01/2019	KL	FINAL	SS	AB
02	12/11/2018	KL	SECOND DRAFT	SS	AB
01	01/11/2018	KL	FIRST DRAFT	SS	AB

DRAWING STATUS: **FINAL**



Head Office: Portway House, Old Sarum Park,
Salisbury, Wiltshire, UK SP4 6EB
www.wessexarch.co.uk

CLIENT:
AQUIND

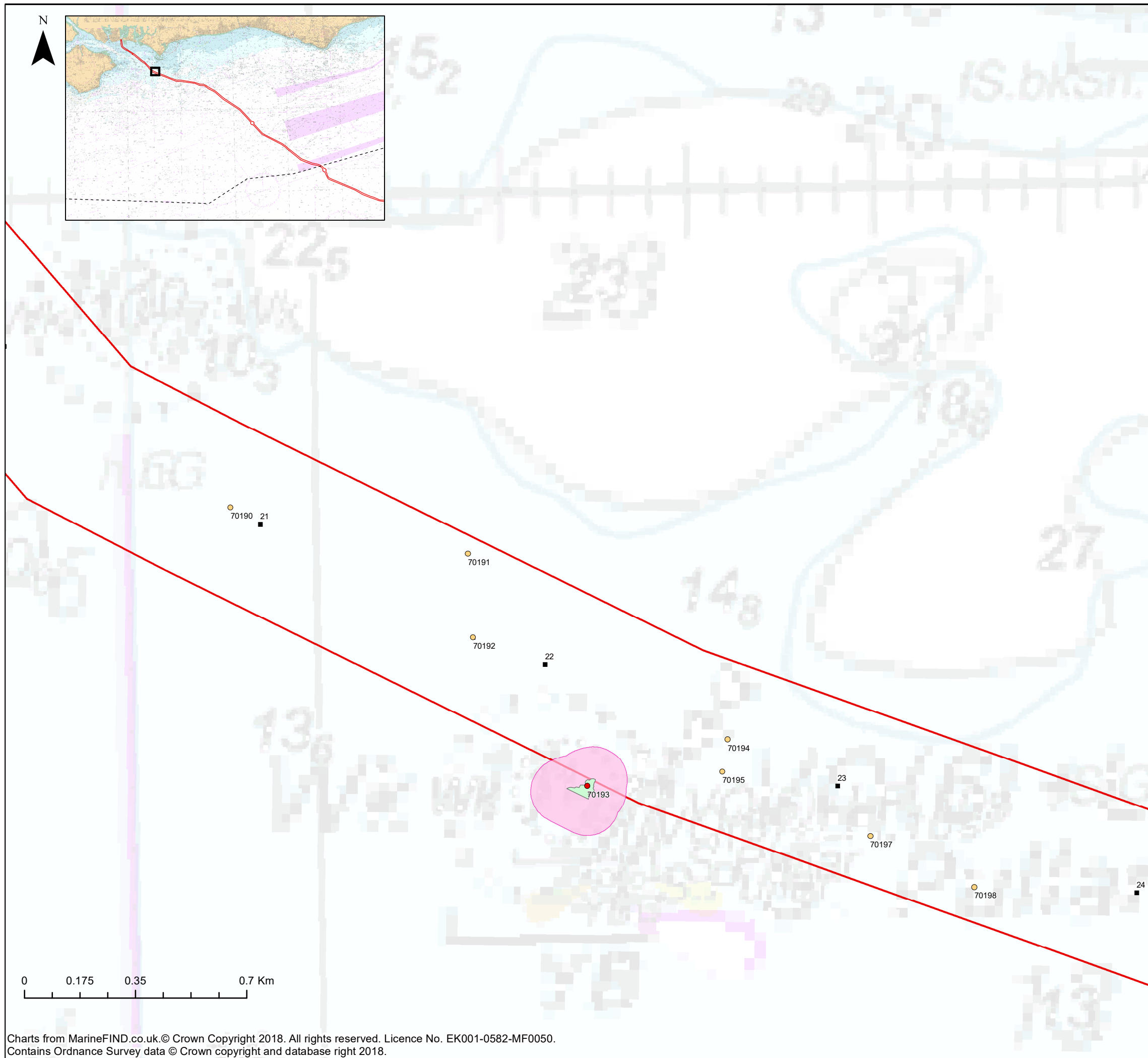
PROJECT:
AQUIND Interconnector

TITLE:
Figure 14.2 Seabed Features of Archaeological Potential

SCALE AT A3 1:12,000	CHECKED: SS	APPROVED: AB
PROJECT NO: EN020022	DESIGNED: KL	DRAWN: KL
DRAWING NO: EN020022 – ES – 14.2		DATE: 22/08/2019
REV.NO. 03		

© WSP UK Ltd

Charts from MarineFIND.co.uk. © Crown Copyright 2018. All rights reserved. Licence No. EK001-0582-MF0050. Contains Ordnance Survey data © Crown copyright and database right 2018.



- AQUIND Interconnector**
- Marine Cable Corridor
 - UK European Economic Zone (EEZ)
 - Seabed feature extents
 - Linear seabed features
 - Recommended Archaeological Exclusion Zones (AEZs)
 - A1 – Anthropogenic origin of archaeological interest
 - A2 – Uncertain origin of possible archaeological interest
 - Kilometre Point (KP)

The Infrastructure Planning (Environmental Impact Assessment) Regulations 2017

REV	DATE	BY	DESCRIPTION	CHK	APP
03	07/01/2019	KL	FINAL	SS	AB
02	12/11/2018	KL	SECOND DRAFT	SS	AB
01	01/11/2018	KL	FIRST DRAFT	SS	AB

DRAWING STATUS: **FINAL**



Head Office: Portway House, Old Sarum Park,
Salisbury, Wiltshire, UK SP4 6EB
www.wessexarch.co.uk



PROJECT:
AQUIND Interconnector

TITLE:
Figure 14.3 Seabed Features of Archaeological Potential

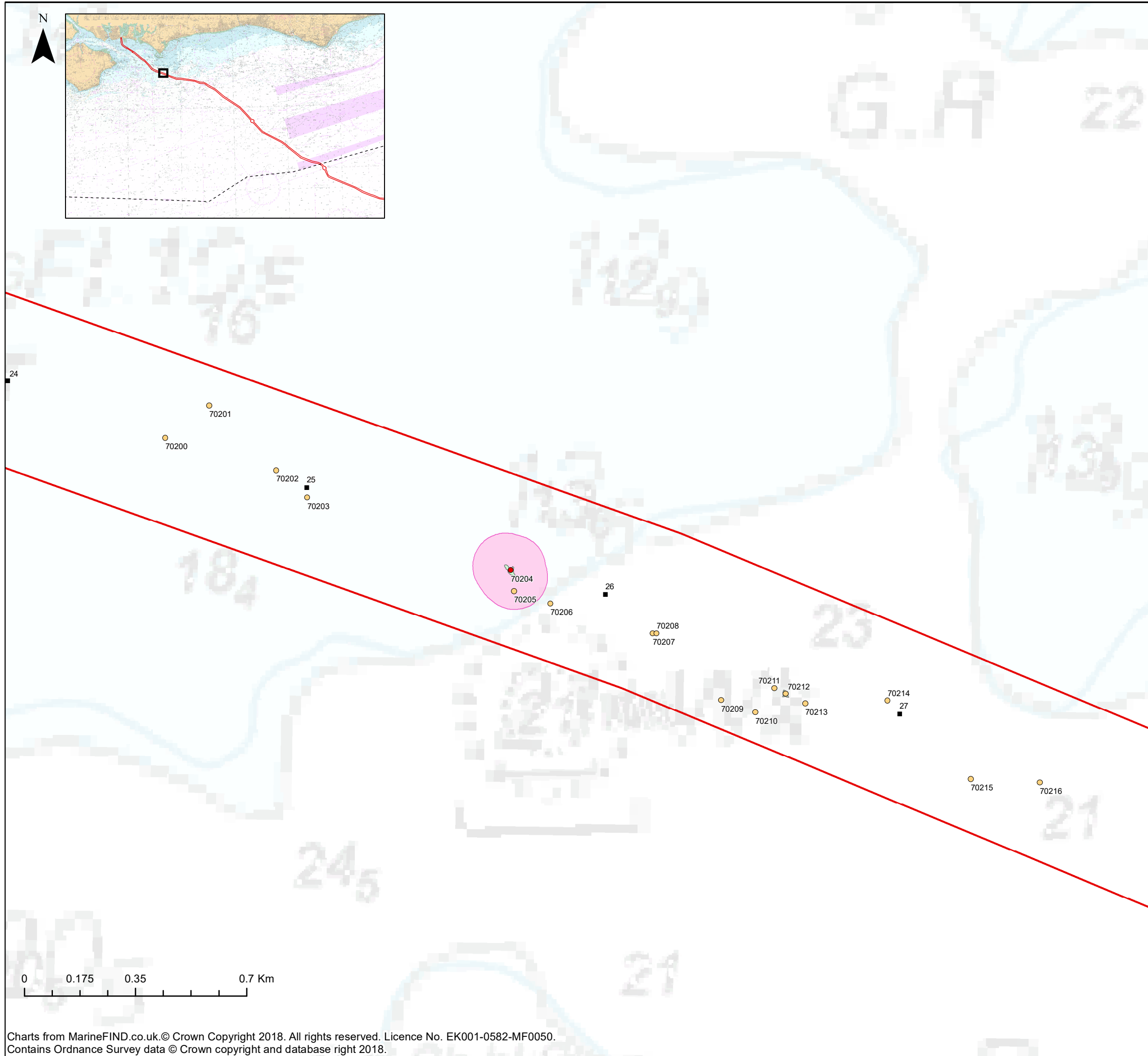
SCALE AT A3 1:12,000	CHECKED: SS	APPROVED: AB
-------------------------	----------------	-----------------

PROJECT NO: EN020022	DESIGNED: KL	DRAWN: KL	DATE: 22/08/2019
-------------------------	-----------------	--------------	---------------------

DRAWING NO: EN020022 – ES – 14.3	REV.NO: 03
--	----------------------

© WSP UK Ltd

Charts from MarineFIND.co.uk. © Crown Copyright 2018. All rights reserved. Licence No. EK001-0582-MF0050. Contains Ordnance Survey data © Crown copyright and database right 2018.



AQUIND Interconnector

- Marine Cable Corridor
- UK European Economic Zone (EEZ)
- Seabed feature extents
- Linear seabed features
- Recommended Archaeological Exclusion Zones (AEZs)
- A1 – Anthropogenic origin of archaeological interest
- A2 – Uncertain origin of possible archaeological interest
- Kilometre Point (KP)

The Infrastructure Planning (Environmental Impact Assessment) Regulations 2017

REV	DATE	BY	DESCRIPTION	CHK	APP
03	07/01/2019	KL	FINAL	SS	AB
02	12/11/2018	KL	SECOND DRAFT	SS	AB
01	01/11/2018	KL	FIRST DRAFT	SS	AB

DRAWING STATUS: **FINAL**

wessex archaeology

Head Office: Portway House, Old Sarum Park,
Salisbury, Wiltshire, UK SP4 6EB
www.wessexarch.co.uk

CLIENT:

AQUIND

PROJECT:

AQUIND Interconnector

TITLE:

Figure 14.4 Seabed Features of
Archaeological Potential

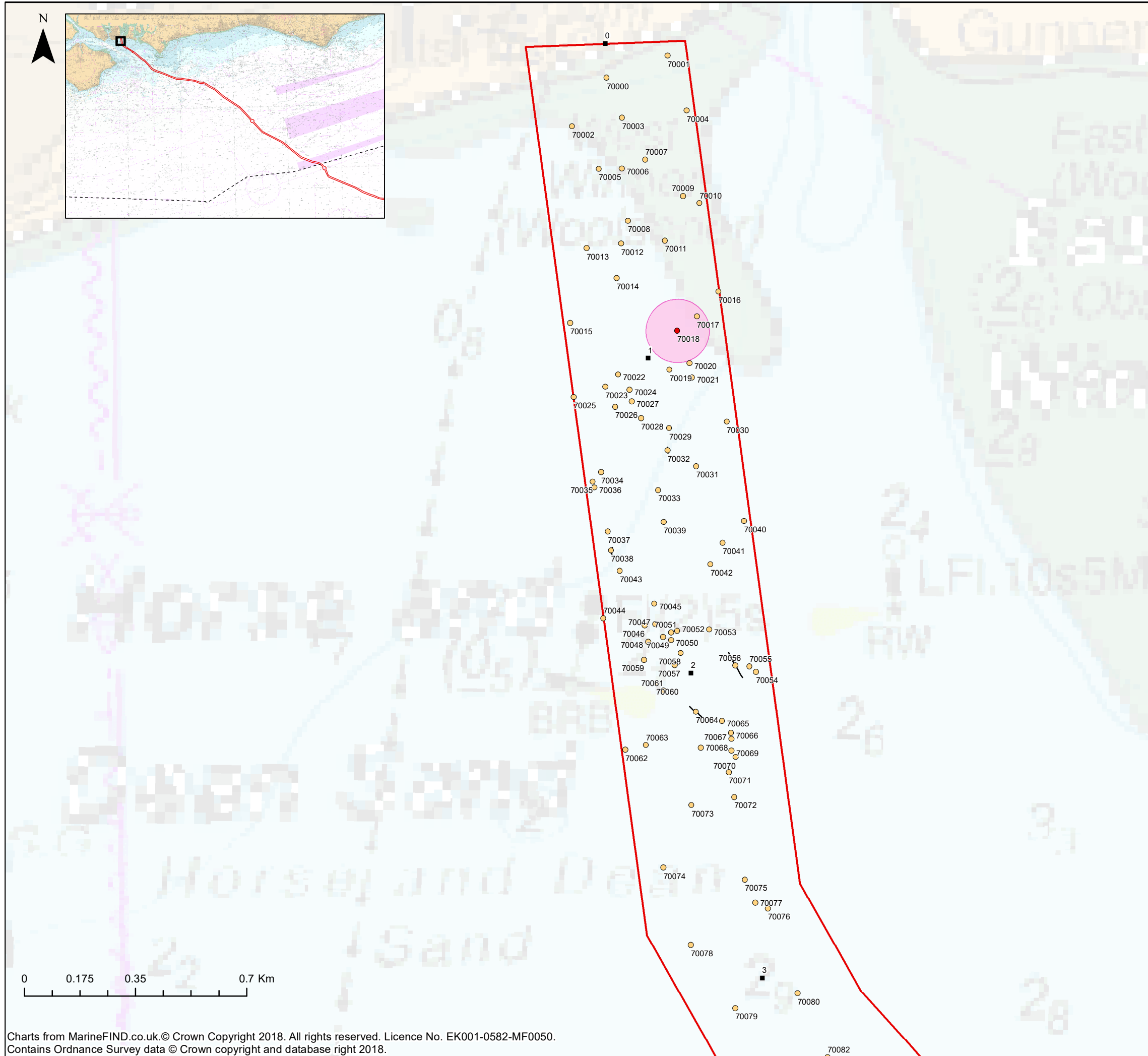
SCALE AT A3 1:12,000	CHECKED: SS	APPROVED: AB
-------------------------	----------------	-----------------

PROJECT NO: EN020022	DESIGNED: KL	DRAWN: KL	DATE: 22/08/2019
-------------------------	-----------------	--------------	---------------------

DRAWING NO: EN020022 – ES – 14.4	REV.NO: 03
--	----------------------

© WSP UK Ltd

Charts from MarineFIND.co.uk. © Crown Copyright 2018. All rights reserved. Licence No. EK001-0582-MF0050. Contains Ordnance Survey data © Crown copyright and database right 2018.



- AQUIND Interconnector**
- Marine Cable Corridor
 - UK European Economic Zone (EEZ)
 - Seabed feature extents
 - Linear seabed features
 - Recommended Archaeological Exclusion Zones (AEZs)
 - A1 – Anthropogenic origin of archaeological interest
 - A2 – Uncertain origin of possible archaeological interest
 - Kilometre Point (KP)

The Infrastructure Planning (Environmental Impact Assessment) Regulations 2017

REV	DATE	BY	DESCRIPTION	CHK	APP
03	07/01/2019	KL	FINAL	SS	AB
02	12/11/2018	KL	SECOND DRAFT	SS	AB
01	01/11/2018	KL	FIRST DRAFT	SS	AB

DRAWING STATUS: **FINAL**



Head Office: Portway House, Old Sarum Park,
Salisbury, Wiltshire, UK SP4 6EB
www.wessexarch.co.uk



PROJECT:

AQUIND Interconnector

TITLE:

Figure 14.5 Seabed Features of
Archaeological Potential

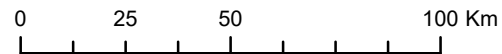
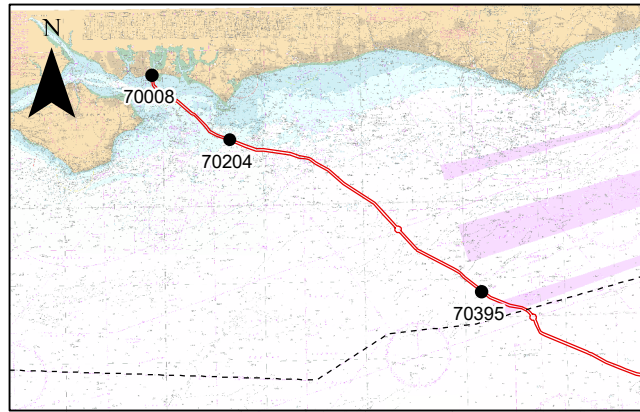
SCALE AT A3 1:12,000	CHECKED: SS	APPROVED: AB
-------------------------	----------------	-----------------

PROJECT NO: EN020022	DESIGNED: KL	DRAWN: KL	DATE: 22/08/2019
-------------------------	-----------------	--------------	---------------------

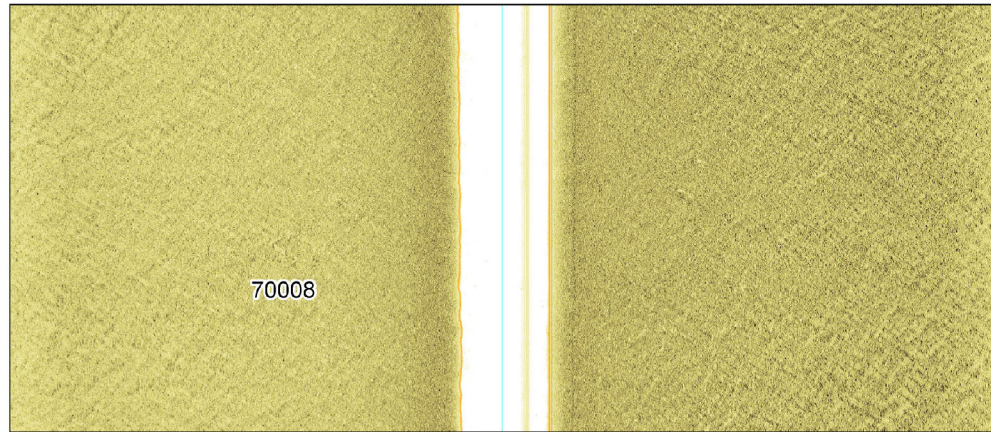
DRAWING NO: EN020022 – ES – 14.5	REV.NO: 03
--	----------------------

© WSP UK Ltd

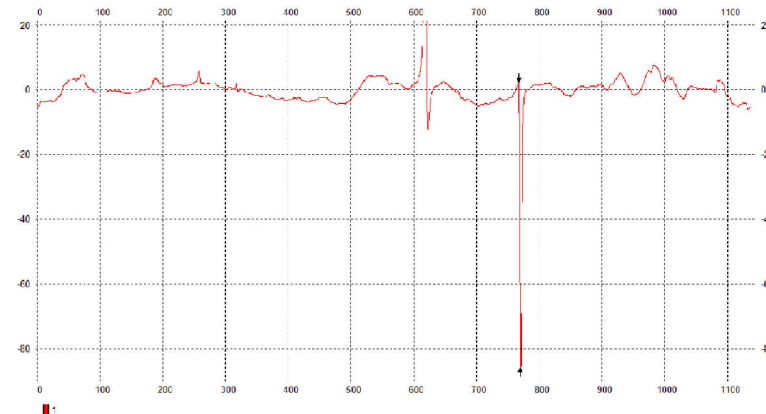
Charts from MarineFIND.co.uk. © Crown Copyright 2018. All rights reserved. Licence No. EK001-0582-MF0050.
Contains Ordnance Survey data © Crown copyright and database right 2018.



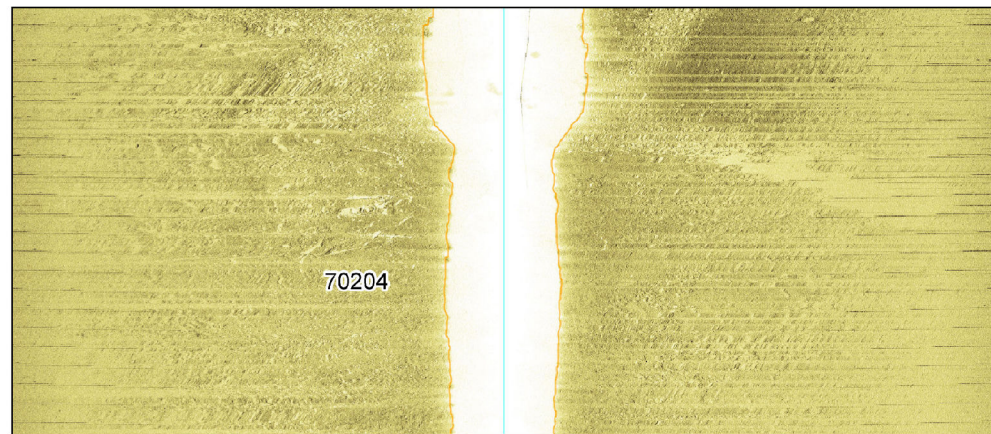
Charts from MarineFIND.co.uk. © Crown Copyright 2018. All rights reserved. Licence No. EK001-0582-MF0050. Contains Ordnance Survey data © Crown copyright and database right 2018.



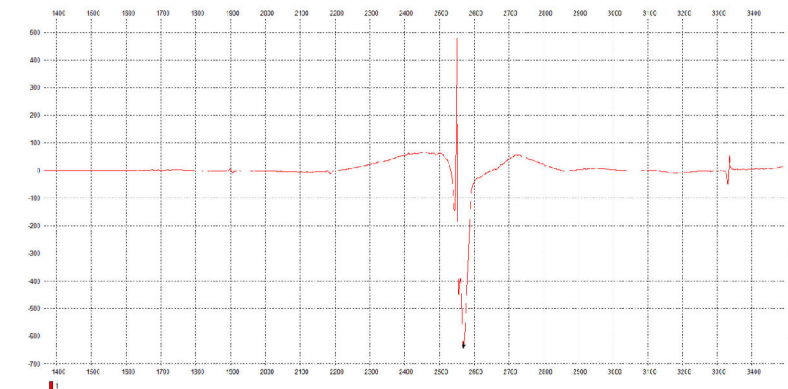
Sidescan sonar image at 50 m range of ferrous debris item 70008, measuring 8.6 x 3.0 m



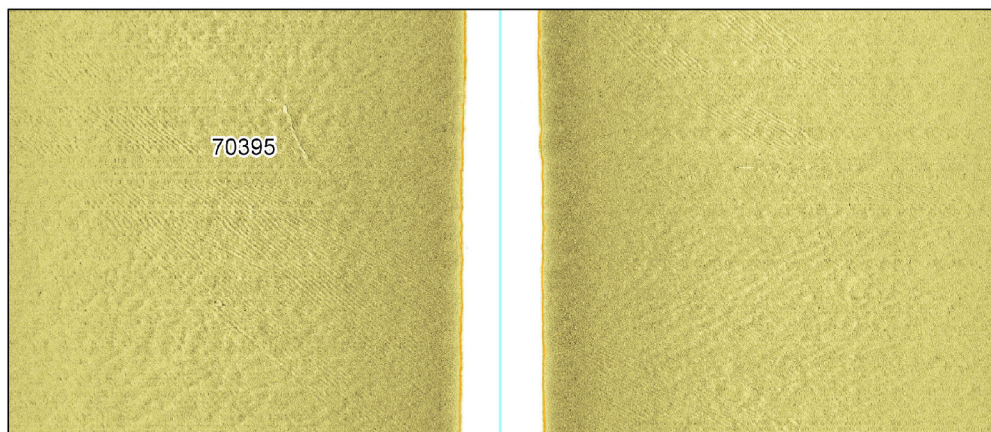
Magnetometer profile image of ferrous debris item 70008, measuring 867 nT



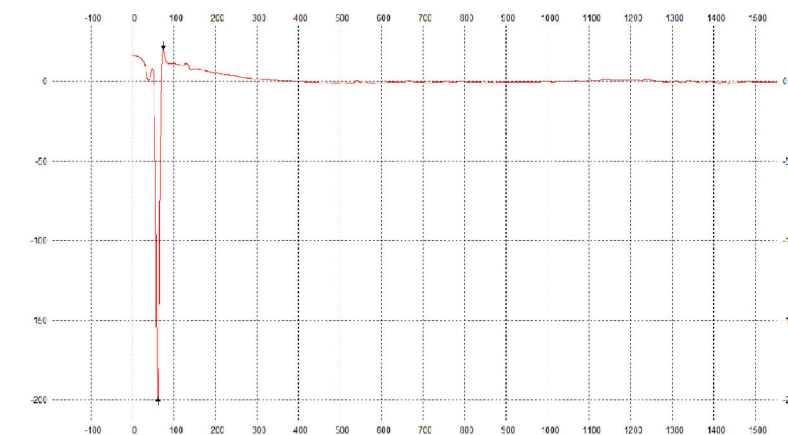
Sidescan sonar image, at 100 m range, of ferrous debris field 70204 measuring 50 x 23 x 1.4 m



Magnetometer profile image of ferrous debris field 70204, measuring 2670 nT



Sidescan sonar image at 80 m range of ferrous linear debris item 70395, measuring 36.5 x 0.3 x 0.1 m



Magnetometer profile image of ferrous linear debris item 70395, measuring 219 nT

- AQUIND Interconnector**
- Marine Cable Corridor
- UK European Economic Zone (EEZ)
- Data example

The Infrastructure Planning (Environmental Impact Assessment) Regulations 2017

REV	DATE	BY	DESCRIPTION	CHK	APP
03	07/01/2019	KL	FINAL	SS	AB
02	12/11/2018	KL	SECOND DRAFT	SS	AB
01	01/11/2018	KL	FIRST DRAFT	SS	AB

DRAWING STATUS:

FINAL



Head Office: Portway House, Old Sarum Park,
Salisbury, Wiltshire, UK SP4 6EB
www.wessexarch.co.uk

CLIENT:



PROJECT:

AQUIND Interconnector

TITLE:

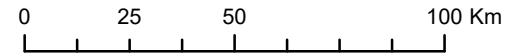
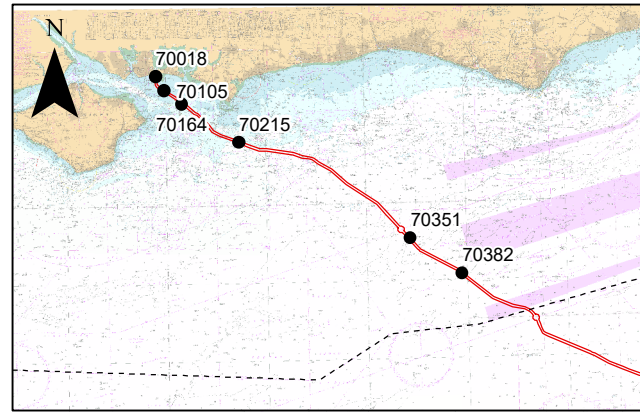
Figure 14.6 Data Examples of
Ferrous Seabed Features

SCALE AT A3 1:1,800,000	CHECKED: SS	APPROVED: AB
----------------------------	----------------	-----------------

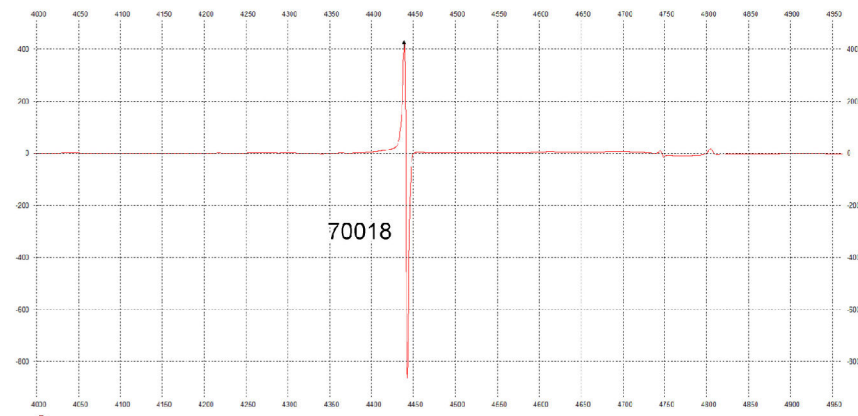
PROJECT NO: EN020022	DESIGNED: KL	DRAWN: KL	DATE: 22/08/2019
-------------------------	-----------------	--------------	---------------------

DRAWING NO: EN020022 – ES – 14.6	REV.NO. 03
-------------------------------------	---------------

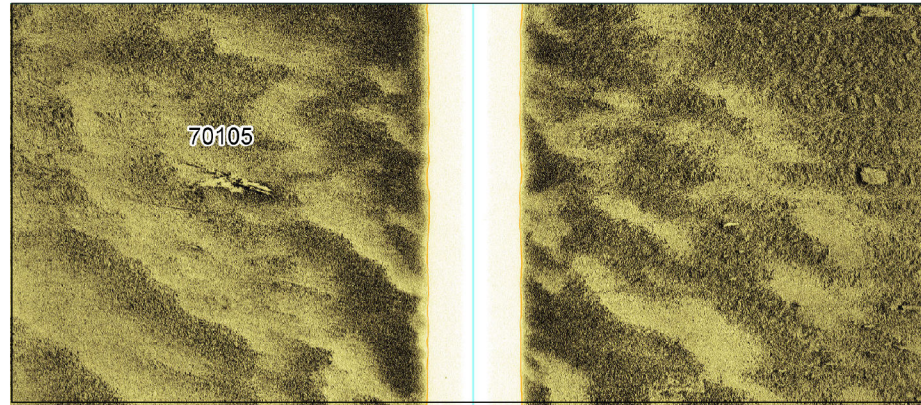
© WSP UK Ltd



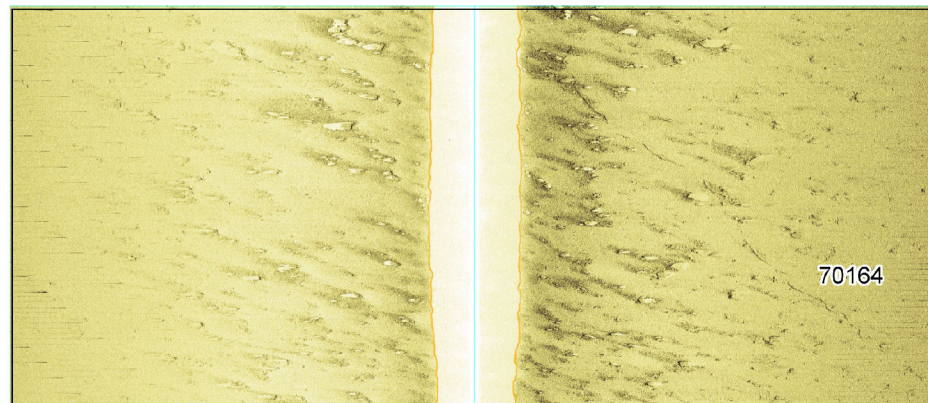
Charts from MarineFIND.co.uk © Crown Copyright 2018. All rights reserved. Licence No. EK001-0582-MF0050. Contains Ordnance Survey data © Crown copyright and database right 2018.



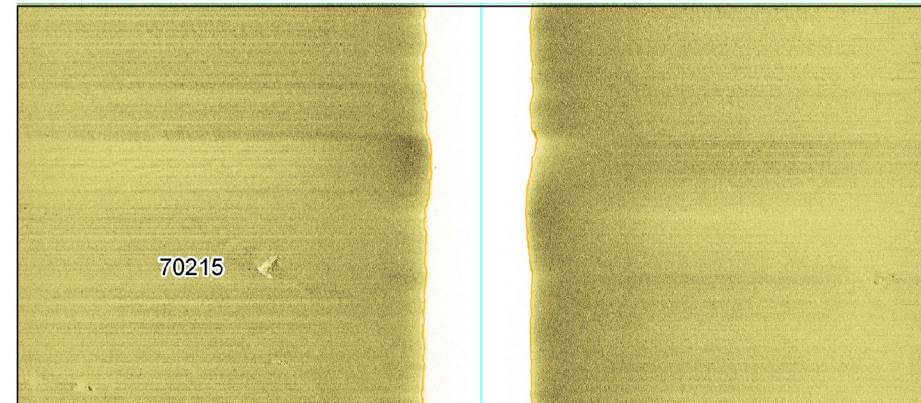
Magnetometer profile image of magnetic anomaly 70018, measuring 1295 nT



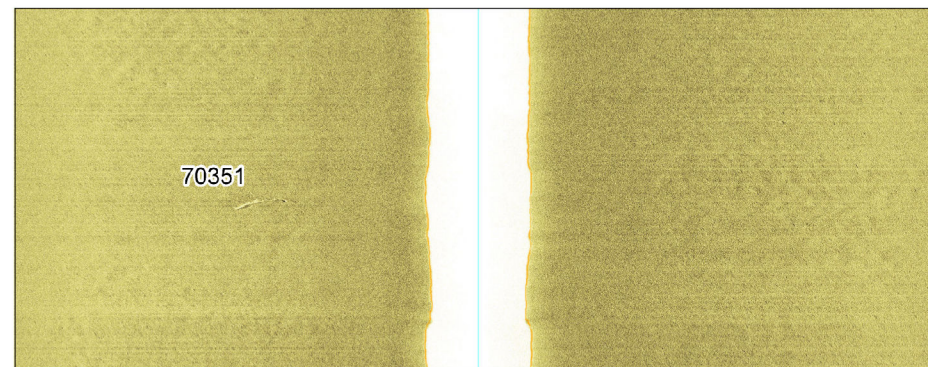
Sidescan sonar image at 50 m range of nonferrous debris field 70105, measuring 9 x 5.2 x 0.5 m



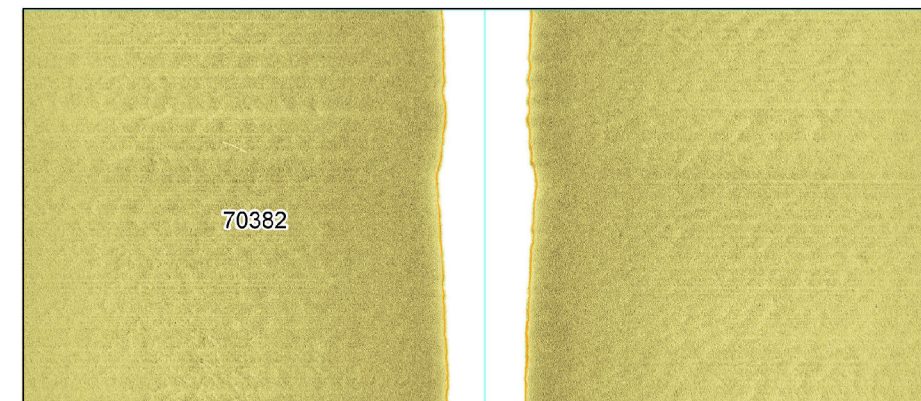
Sidescan sonar image at 80 m range of rope/chain item 70164, measuring 6134.6 x 0.4 x 0.1 m



Sidescan sonar image at 80 m range of nonferrous debris item 70215, measuring 7.8 x 0.8 x 0.6 m



Sidescan sonar image at 80 m range of nonferrous debris item 70351, measuring 10.7 x 0.8 x 0.1 m



Sidescan sonar image at 80 m range of linear bright reflector item 70382, measuring 6.1 x 0.8 m

- AQUIND Interconnector**
- Marine Cable Corridor
- UK European Economic Zone (EEZ)
- Data example

The Infrastructure Planning (Environmental Impact Assessment) Regulations 2017

REV	DATE	BY	DESCRIPTION	CHK	APP
03	07/01/2019	KL	FINAL	SS	AB
02	12/11/2018	KL	SECOND DRAFT	SS	AB
01	01/11/2018	KL	FIRST DRAFT	SS	AB

DRAWING STATUS:

FINAL



Head Office: Portway House, Old Sarum Park,
Salisbury, Wiltshire, UK SP4 6EB
www.wessexarch.co.uk

CLIENT:



PROJECT:

AQUIND Interconnector

TITLE:

**Figure 14.7 Data Examples of
Ferrous Seabed Features**

SCALE AT A3 1:1,800,000	CHECKED: SS	APPROVED: AB
----------------------------	----------------	-----------------

PROJECT NO: EN020022	DESIGNED: KL	DRAWN: KL	DATE: 22/08/2019
-------------------------	-----------------	--------------	---------------------

DRAWING NO: EN020022 – ES – 14.7	REV.NO. 03
--	----------------------

© WSP UK Ltd